

## CES system SP

The conventional key section series  
with patent protection for high  
standards in industrial building



# Locking system technology with patent protection

The CES key section series SP is designed as a conventional key system to meet exacting standards in industrial buildings. Highest locking precision and several layers of security queries ensure optimum protection against manipulation.

The CES SP key system is protected by a patent, which offers legal protection against unauthorized duplication of the original keys.

The SP system can be combined with the electronic locking and access control solutions available from CEStronics. For entrances, access roads or company areas where access must be restricted to defined times, electronic locking components are the solution of choice as they provide a high level of flexibility for granting and withdrawing access authorizations.

Successful enterprises rely on CES locking engineering with the patent-protected SP system. For reasons of security, we do not quote any references at this point. However, we shall gladly establish a contact to users.



# The SP system

## DIN 18252/EN 1303 compliant

### Optimum locking security

The SP system has 5 or 6 nickel silver pin tumblers on each cylinder side.

### Integrated basic protection against drilling

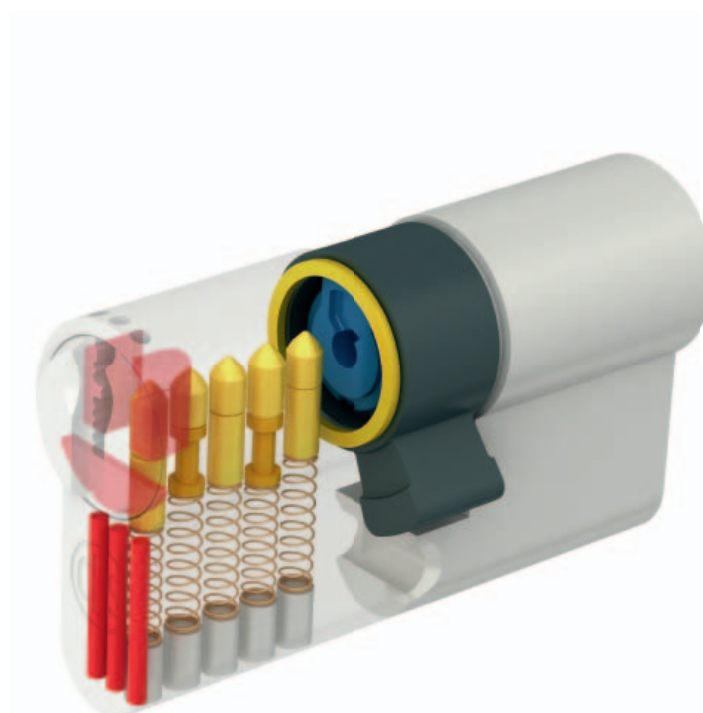
Already in their standard version, all cylinders of the SP system are provided with an integrated basic protection against drilling. Different materials, such as hardened steel for key and driver pins, are employed to make drilling more difficult. At least one driver pin and all key pins are made of hardened steel. And stepped locking pins that cant if a drilling attempt is made prevent the opening of the cylinder.

### Strong nickel silver key

Very handy and made according to DIN standard. The key shank is at least 14 mm long and perfectly suited for commercial armatures with cylinder covering. Inserting the key into the cylinder is easy thanks to a specially shaped and patented key tip. A guiding groove along the entire cylinder plug ensures a positive transfer of the key torque and prevents breaking of the key.

### Security card

Replacement orders and extensions are only possible against presentation of the security card supplied with the locking system.



## Options and extras

- **Modular system**

Profile cylinders of the SP system are also available in modular design. This means that – if necessary – the length of these modular cylinders can be adapted to the thickness of the door on site, saving both time and money.

- **Additional anti-drilling and anti-pulling protection**

For applications in particularly security-relevant areas, SP cylinders can be equipped with additional hard-metal pins and plates in the hull and on the cylinder plug face.

- **Double, single and knob cylinders (nos. 910, 9710, 951 1/2, 915) are also available as VdS certified cylinders of the classes AZ, BZ and BZ+.**

- **Bump-proof version**

- **Sea-water resistance**

- **Wear-resistant version**

- **Colours**

Cylinders are available in a wide range of colours. Upon request, both cylinder halves can also be supplied in different colours.

- **Furniture / special cylinders**

The SP system is also suitable for furniture and special cylinders from the CES range.

- **Electronic access solutions**

SP cylinders are compatible with all electronic locking systems available from CEStronics.

### Accessories

Locking system management software CESportier®vision.



## Selection of DIN 18252 / EN 1303 compliant designs

### Double cylinder no. 810 SP

Brass, satin nickel plated  
3 nickel silver keys

### Double cylinder no. 8710 SP

with emergency and danger function  
Brass, satin nickel plated  
Locking on both sides  
3 nickel silver keys

### Cam cylinder no. 5558/30 SP

Brass, polished nickel plated  
Locking movement 90°  
Locking direction as desired  
Fitting dimension 25 mm  
2 nickel silver keys

### Single cylinder no. 851 1/2 SP

Brass, satin nickel plated  
Follower adjustable in 12 positions  
3 nickel silver keys

### Cylinder padlock no. 215 SP

Stainless steel shackle  
Housing 58 mm wide, 50 mm high  
Latches without locking  
Shackle clearance 35 mm (standard)  
2 nickel silver keys

### Knob cylinder no. 815 SP

Brass, satin nickel plated  
One side locking  
Other side aluminium knob, F1, various knob shapes available (figure shows shape H)  
3 nickel silver keys

### Cylinder insert no. 802/5 SP

Brass, satin nickel plated  
One side locking, the other side blind  
3 nickel silver keys

#### Basic cylinder lengths:

5 pins:	27,5/27,5 mm
6 pins:	31,5/31,5 mm

Further variants are available.

Also available in British and Scandinavian profile and as ANSI cylinders.



**C. Ed. Schulte GmbH**  
**Zylinderschloßfabrik**

Friedrichstraße 243  
D-42551 Velbert  
☎ +49 (0)2051-204-0  
☎ +49 (0)2051-204-229  
✉ info@ces.eu  
www.ces.eu

**CEStronics GmbH**

Friedrichstraße 243  
D-42551 Velbert  
☎ +49 (0)2051-204-0  
☎ +49 (0)2051-204-229  
✉ info@ces-tronics.de

**CESlocks GmbH**

Mettmanner Str. 119  
D-42549 Velbert  
☎ +49 (0)2051-204-204  
☎ +49 (0)2051-204-229  
✉ info@ces-locks.de

**CESfrance SARL**

8 Impasse Charles Petit  
F-75011 Paris  
☎ +33 (0)1-44 87 07 56  
☎ +33 (0)1-43 07 35 78  
✉ info@fr.ces.eu  
www.ces.eu/fr

**CESnederland B.V.**

Lage Brink 9  
NL- 7317 BD Apeldoorn  
☎ +31 (0)55-52 66 89-0  
☎ +31 (0)55-52 66 89-9  
✉ info@nl.ces.eu  
www.ces.eu/nl

**CESitalia srl**

V. d. vecchie Fondamenta, 4  
Straße d. A. Gründungen 4  
I-39044 Egna / Neumarkt (BZ)  
☎ +39 0471-812 294  
☎ +39 0471-812 294  
✉ info@it.ces.eu  
www.ces.eu/it

**CES Security Solutions Ltd**

Unit 6-8 Revenge Road  
GB-Lordswood, Chatham  
Kent ME5 8UD  
☎ +44 (0)1634-673301  
☎ +44 (0)1634-673326  
✉ info@uk.ces.eu  
www.ces.eu/en

**CESrom srl.**

Str. Metalurgistilor 3 D  
RO-550137 Sibiu  
☎ +40 (0)269-206 00-2  
☎ +40 (0)269-206 00-5  
✉ info@ro.ces.eu

Your technical adviser on security matters: