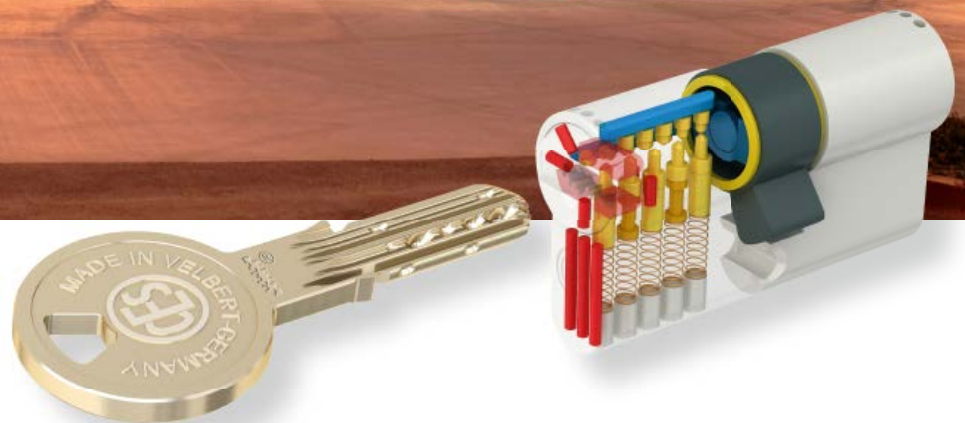


CES System WM

The reversible key system
with locking bar for
high standards in industrial buildings



System description

The CES System WM is designed as a reversible key system for industrial buildings. Highest locking precision and several layers of security queries ensure optimum protection against manipulation.

The use of a special locking bar technology guarantees long-lasting functionality. The locking areas are multiplied by the locking bars used in this system.

A specially formed and patented key tip allows easy insertion of the key into the cylinder. A guiding groove along the entire cylinder plug ensures the positive transfer of the key torque and prevents the key from breaking.

The KM system can be combined with the electronic locking and access control solutions available from CES. For entrances, access roads or company areas where access must be restricted to defined times, electronic locking components are recommended. They allow a flexible granting and withdrawing of access authorizations.

Successful enterprises rely on a brand product made by CES. For reasons of security, we do not quote any references at this point. However, we shall gladly establish contact with users.



Accessories and special equipment

- **Modular system possible**

Profile cylinders belonging to the WM system are also available in modular design. This means that – if necessary – the length of the cylinders can be adapted to the thickness of the door on site, saving both time and money.

- **Additional anti-drilling and anti-pulling protection**

For applications in particularly security-relevant areas, the cylinders can be equipped with additional pins and plates in the case and on the cylinder plug face made of hardened steel.

- **Double, half and knob cylinders (910, 9710, 951 1/2, 915)** are also available as VdS-certified cylinders of the classes AZ, BZ and BZ+.

- **Version with impact protection**

- **Seawater resistant**

- **Wear-resistant version**

- **Colours**

Cylinders are available in a wide range of colours. Upon request, cylinder halves in modular design can also be supplied in different colours.

- **Furniture and special cylinders**

The WM locking system is also suitable for furniture and special cylinders from the CES range.

- **Electronic access solutions**

WM cylinders are compatible with all electronic locking systems available from CES.

- **Accessories**

Locking system management software portier[®]vision



Selection of designs DIN 18252/EN 1303 compliant

Profile double cylinder no. 810 WM

Brass, satin nickel-plated

Profile double cylinder no. 8710 WM

With emergency and danger function
Brass, satin nickel-plated
Lockable on both sides

Free-running profile double cylinder No. 8710F WM

for multipoint locking
with panic function
Brass, satin nickel-plated

Profile half cylinder no. 851 1/2 WM

Brass, satin nickel-plated
Cam adjustable in 12 positions

Profile knob cylinder no. 815 WM

Brass, satin nickel-plated
Locking function on one side,
aluminum knob on the other side, F1,
various knob shapes available
(figure shows shape H)

Cam cylinder no. 5558/30 WM

Brass, polished nickel-plated
Locking movement 90°
Locking direction as desired
Fitting dimension 25 mm

Padlock no. 215 N/58 WM

Lock case chromium velour finish
Shackle stainless steel
Case width 58 mm, height 50 mm
Key removable without locking
Shackle clearance 35 mm (standard)

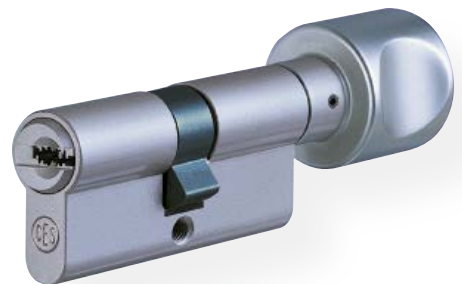
Profile insert no. 802/5 WM

Brass, satin nickel-plated
Locking function on one side,
dummy cylinder on the other side

Basic lengths for profile cylinders:

5 pins:	27.5/27.5 mm
6 pins:	31.5/31.5 mm
7 pins:	35.5/35.5 mm

Further variants are available.
Also available in Swiss, British and Scandinavian profile.



5 pins:	27.5/27.5 mm
6 pins:	31.5/31.5 mm
7 pins:	35.5/35.5 mm



**C.Ed. Schulte GmbH
Zylinderschlossfabrik**

Friedrichstraße 243
D-42551 Velbert
☎ +49 2051 204 0
☎ +49 2051 204 229
✉ info@ces.eu

CESnederland B.V.

Lage Brink 9
NL-7317 BD Apeldoorn
☎ +31 55-52 66 89 0
☎ +31 55-52 66 89 9
✉ infonl@ces.eu

CESfrance SARL

8 Impasse Charles Petit
F-75011 Paris
☎ +33 1 44 87 07 56
☎ +33 1 43 07 35 78
✉ info@fr.ces.eu

CESitalia srl

V. d. vecchie Fondamenta, 4
Straße d. A. Gründungen 4
I-39044 Egna/Neumarkt (BZ)
☎ +39 0471 812 294
☎ +39 0471 812 294
✉ info@it.ces.eu

CESrom srl.

Str. Metalurgistilor 3 D
RO-550137 Sibiu
☎ +40 269-206 00 2
☎ +40 269-206 00 5
✉ info@ro.ces.eu

United Kingdom

CES Security Solutions Ltd.

Unit 4 Kendon Business Park
Maritime Close, Medway City Estate
Rochester, Kent ME2 4JF
☎ +44 1634713369
☎ +44 1634786833
✉ info@uk.ces.eu

Middle East

A.G.P Advanced German Products LLC

PO Box 102761,
UAE Dubai
☎ +971 4 885 7050
+971 4 369 7051
☎ +971 4 390 8935
✉ info@agp-dubai.com

Austria

César A. Cárcamo

Büro: Wiener Bundesstrasse 33
A-4050 Traun
☎ +43 660-73 20 311
☎ +43 732-21 00 22 2681
✉ office@ces.at

Belgium

Locking Systems

Guy Lambrechts
Van Haefthenlaan 10
BE-2950 Kapellen
☎ +32 497 946267
✉ guy.lambrechts@lockingsystems.be

Spain

Benidorm Locks S.L.

Av. Marina Baixa s/n
Partida Torrent
ES-03530 La Nucia, Alicante
☎ +34 96 689 79 79
☎ +34 96 689 79 78
✉ info@benidormlocks.com