

# 8230

## Mortise lock

For radiation protection doors

### Designation/features

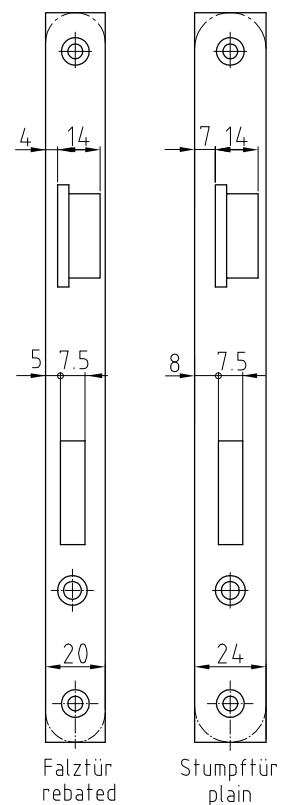
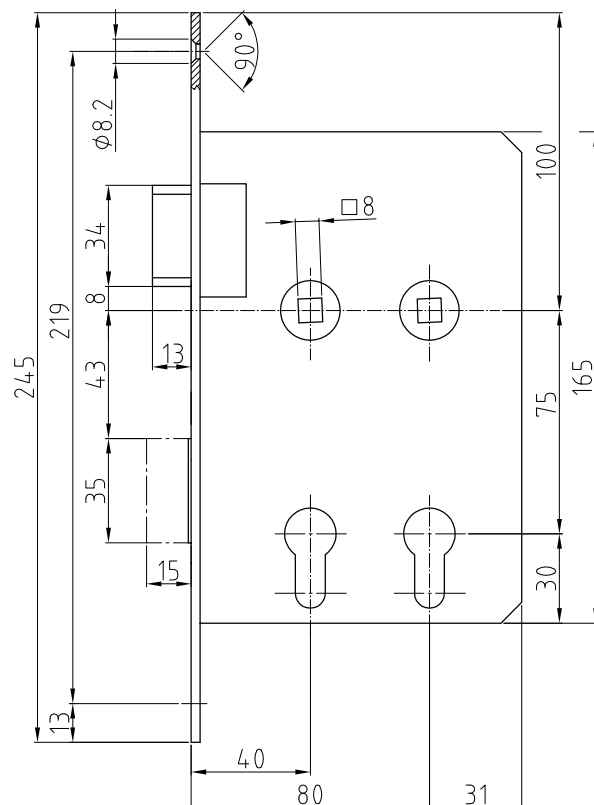
prepared for profile cylinders
no reversible latchbolt
Holes for 40 and 80 mm backset
Centre distance 75 mm
Follower 8 mm
Forend 20 x 245 mm for rebated doors, or 24 x 245 mm for flush doors edged or rounded, satin stainless steel
Latchbolt and deadbolt made of brass, nickel-plated

### Variants

8234	with reversible latchbolt (with 40 or 80 mm backset, as required)
------	-------------------------------------------------------------------



Article No.  
8230



Art.-Nr. 8230