

CES Modular System

Security – off the shelf

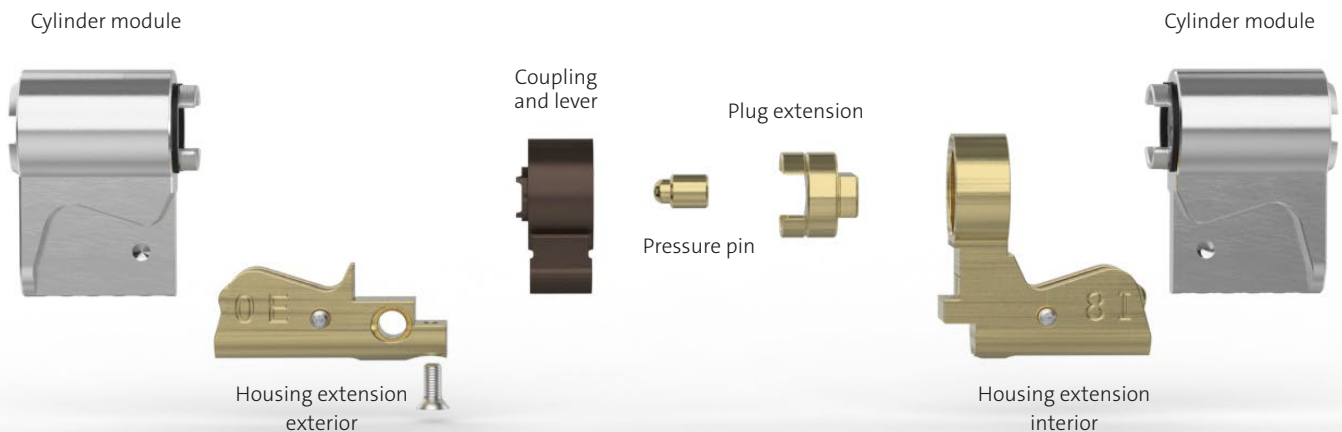


Illustration shows an 812MO double cylinder + MOKI-08-00 with dimensions 35.5 (interior)/27.5 mm (exterior)



Scan here for the assembly animation:

Flexible assembly

Our modular system allows you to adapt CES single, double and even knob cylinders on site to the required door thickness. The modular system is available for all customer profile systems and locking systems and is supplied with ready-to-use cylinder modules.

The locking cylinders are high-quality, precision-machined units and make a good visual impression. The cylinder modules are available in all galvanic special finishes.

Advantages of the modular system

- Locking cylinder is easy to assemble and remove
- High strength and stability, similar to compact locking cylinders
- Enhanced anti-pulling and anti-picking protection
The cylinder modules are fully loaded, with the locking system integrated
- Cylinder lengths can be individually modified to the thickness of each door

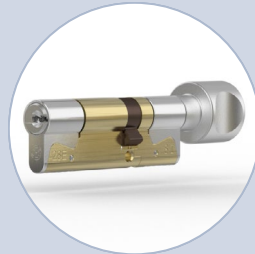
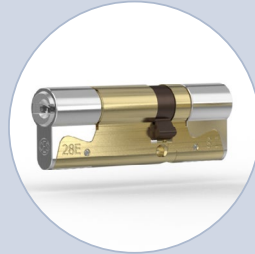
Applications

- Construction projects in which door thicknesses are not known
- Residential building renovation projects
- Emergency service interventions
- Heavily used front doors

Security features

The full use of the chamber depths in the housing allows the use of solid pins. Additionally, the first housing pin is hardened as standard, so that identical strength values are obtained to those of one-piece locking cylinders.

The modular locking system is designed in such a way that if a pulling attempt is made, the cylinder jams and the expansion forces act on the protective handle.



Available cylinder modules

- 811MO half cylinder
One cylinder module with locking system including coupling and lever
- 812MO* double cylinder with emergency function
Two cylinder modules with locking system including coupling and lever
- 813MO* knob cylinder
One cylinder module with locking system, one cylinder modules with knob shaft including coupling and lever
- 814MO single cylinder module
One cylinder module with locking system

Delivery time

Orders are produced in our fast delivery programme and ready within 48 hours

For MOKI extension kits, the delivery time is up to 15 working days.

Certifications:



Assembly tool case

For cylinder lengths

5 pins: 27/27 mm to 55/55 mm

6 pins: 31/31 mm to 60/60 mm



Extension kits

The practical extension kits (MOKI) are ideal for use with your customers or in your local hardware shop. Intended for the assembly of single, double or knob cylinders, the kits contain:

- Housing extension for the exterior side
- Extension piece
- Plug extension
- Housing extension for the interior side

If a particular length runs out, you can simply re-order it.

Help for ordering MOKI extension kits:

Article no.	Extension interior/ exterior	5-pin	6-pin
MOKI-00-00	00/00 mm	27/27 mm	31/31 mm
MOKI-00-04	00/04 mm	27/31 mm	31/35 mm
MOKI-00-08	00/08 mm	27/35 mm	31/40 mm
MOKI-00-13	00/13 mm	27/40 mm	31/45 mm
MOKI-00-18	00/18 mm	27/45 mm	31/50 mm
MOKI-00-23	00/23 mm	27/50 mm	31/55 mm
MOKI-00-28	00/28 mm	27/55 mm	31/60 mm
MOKI-04-04	04/04 mm	31/31 mm	35/35 mm
...
MOKI-28-28	28/28 mm	55/55 mm	60/60 mm

*For articles 812MO and 813MO: Maximum length of one locking side 200 mm. Maximum total length 340 mm.