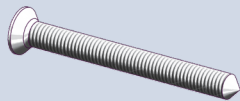


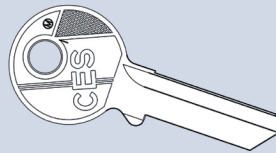
## Rekeying Instructions and Accessories for CES Profile Cylinders

- Rekeying should be done by qualified locksmith.
- Cylinders feature Schlage® SC1 keyways and may be rekeyed using Schlage® rekey kits.
- Cylinders should be rekeyed to an existing Schlage® key whenever possible.
- When rekeying a CES cylinder using CES pins, use the CES pin number that corresponds with the measure key cut.
- When rekeying a CES cylinder using Schlage® pins, use the Schlage® pin number that is less than the measured key cut. A key cut measuring 4 uses a #3 Schlage® pin.

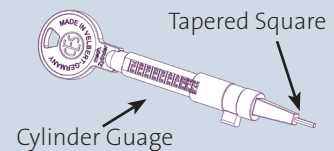


Part#	Description
94100V-5D50	50mm
94100V-5E70	70mm

Other lengths/materials on request



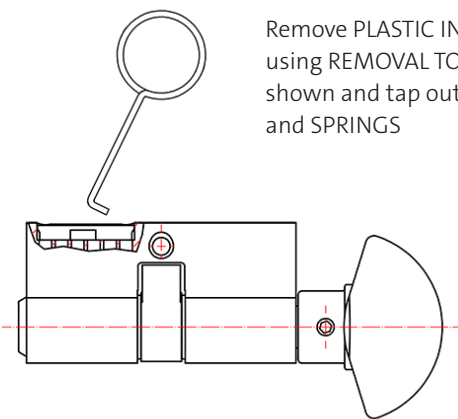
**SCHL-R50-AMC**  
Key Blanks- Schlage® 5-Pin



**096140**  
Construction Key with Cylinder Gauge.

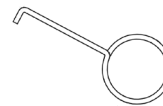
### Steps to Rekey CES Cylinder with Plastic Insert

**1.**



Remove PLASTIC INSERT using REMOVAL TOOL as shown and tap out PINS and SPRINGS

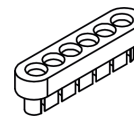
**91276V**  
Removal Tool



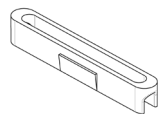
**91272V**  
Assembly Tool to turn the cam



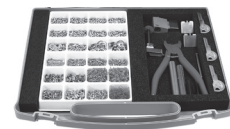
**96084V**  
Funnel



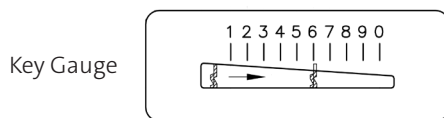
**609613V**  
Plastic Insert



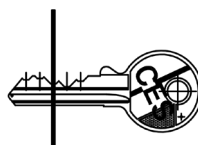
Part#	Description
Keying-Kit	Keying Kit-100 cylinder capacity
Refill-Kit	Refill Kit- 10 cylinder capacity



**2.**



Key Gauge



Determine CORE PIN size with KEYING GAUGE

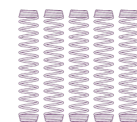
**3.**

- Insert desired CORE PIN into the appropriate cylinder pin hole.
- Note: For the cylinder designs featuring six pin holes, the innermost hole (furthest from the key face) is left blank.
- Insert HOUSING PIN
- Insert SPRING
- Repeat until all PINS have been replaced and install PLASTIC INSERT

PLASTIC PLUG



SPRINGS



HOUSING (TOP) PINS



CORE (BOTTOM) PINS



For best results, CES recommends the use of LAB pins and accessories

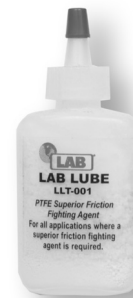
### CES Keying Kits from LAB

**OMK164**  
Keying KIT



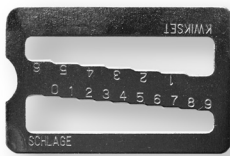
### Lubricant

**LLT-001**



### 2-N-1 Key Gauge

**LKGKS**  
Keying KIT



### Tweezers

**LZT 001**



### Pin/Workmat

**LABMAT**



Key Gauge	<b>CESKPG</b>	1 Per Polybag
Springs	<b>CESSPG</b>	25 Per Polybag
Key Blank	<b>CESKBP</b>	5 Per Polybag
Cap Removal Tool	<b>CESPRT</b>	1 Per Polybag
Cylinder Rotation Tool	<b>CESCRT</b>	1 Per Polybag
Plastic Cap	<b>CESPCP</b>	10 Per Polybag
Cylinder Loading Tool	<b>CESCLTP</b>	1 Per Polybag
Top Pin	<b>CESTPP</b>	50 Per Polybag
Spool Pin	<b>CESSPP</b>	50 Per Polybag

#8 Bottom Pin	<b>CES8BP</b>	50 Per Polybag
#7 Bottom Pin	<b>CES7BP</b>	50 Per Polybag
#6 Bottom Pin	<b>CES6BP</b>	50 Per Polybag
#5 Bottom Pin	<b>CES5BP</b>	50 Per Polybag
#4 Bottom Pin	<b>CES4BP</b>	50 Per Polybag
#3 Bottom Pin	<b>CES3BP</b>	50 Per Polybag
#2 Bottom Pin	<b>CES2BP</b>	50 Per Polybag
#1 Bottom Pin	<b>CES1BP</b>	50 Per Polybag
#0 Bottom Pin	<b>CES0BP</b>	50 Per Polybag